

# HCPCS Code A5500 Footwear

*For feet in need of special care*



FOOTSAVER<sup>®</sup>



ICS Shoes

Voice: (877) 553-5544

Email: [info@icsShoes.com](mailto:info@icsShoes.com)

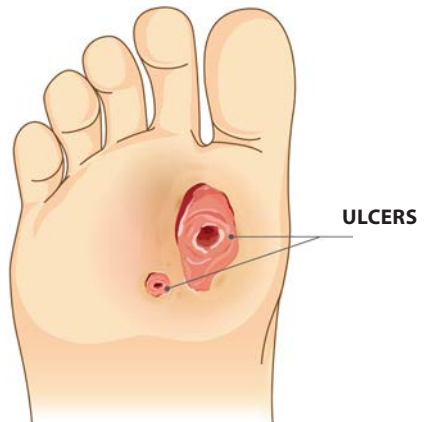
Website: [www.icsShoes.com](http://www.icsShoes.com)

# Diabetes

Diabetes is a syndrome in which the basic defect is the absence or shortage of the pancreatic hormone insulin. Diabetes runs in families, although there is no simple pattern of inheritance. It is estimated that there are over 30 million people living with Diabetes in the United States and another 84 million in the pre diabetes stage. This deficiency disrupts the vascular system thus affecting the eyes, kidneys, legs and other extremities such as the feet. Factors besides heredity include diet, body weight and smoking.

**Symptoms** - Many diabetic foot problems arise from a combination of circumstances, but two factors predominate: peripheral vascular disease and peripheral neuropathy. Poor circulation causes hypo-sensitivity (lack of feeling), possibly resulting in ulcers, gangrene and amputation. With neuropathy, charcot joints, multiple fractures and deformities occur. With these possible complications, ***proper foot care and footwear take on a new importance to the diabetic patient.***

**Footwear** - Clinical studies have shown that footwear and prescribed custom orthotics play an important part in diabetic foot care. By limiting potential ulcer complications, the chance of amputation is diminished. Footsaver® footwear is often prescribed for people with foot health issues. The shoes are designed with rounded toes and a wide shank area to accommodate the foot. Each shoe also incorporates a long and/or strong medial counter for rear foot stability, extra support and balance. These are necessities in normal maintenance of foot health. Doctors, Podiatrists and Physicians often prescribe orthotics to reduce and redistribute pressure and pressure points. These specifically designed inserts work exceptionally well with Footsaver® footwear - shoes designed with removable, cushion inserts and extra inside capacity to accommodate custom orthotics. Be sure to consult your Physician about your diabetic symptoms and your concerns about foot health and maintenance. Your Physician, Ped-orthist and Footsaver® footwear are a great combination for comfort, fit and foot health.



# Women's

TICKER



BINGO



DABBER



## Ticker, Bingo, Dabber

### HCPCS Code A5500 Double Depth

- Double Depth with two removable inserts for a customized fit
- Accommodates prescribed orthotics
- Soft, Nylex fabric lining
- Wide, tempered steel shank
- Lightweight, polyurethane outsole
- Firm heel counter

#### TICKER

- 80295-P1 Black
- 80295-P3 Taupe

#### DABBER

- 84521-P1 Black
- 84521-P3 Taupe

#### BINGO

- 84326-P1 Black
- 84326-T1 Black Crocodile Patent
- 84326-S1 Black with Stretch

#### Sizes:

Medium (B) 5-11,12

Wide (D) 5-11,12

Wide Wide (EE) 5-11,12



DICE



## DICE

---

### HCPCS Code A5500 Added Depth

- Added Depth with removable insert
- Accommodates prescribed orthotics
- Soft, Nylex fabric lining
- Tempered steel shank
- Durable canvas fabric upper
- Lightweight, rubber outsole
- Foam padded collar
- Firm heel counter

### DICE

- 89172-F7 Navy
- 89172-F4 White

### Sizes:

Medium (B) 5-11,12  
 Wide (D) 5-11,12  
 Wide Wide (EE) 5-11,12



RUMMY

## Rummy

---

### HCPCS Code A5500 Double Depth

- Double Depth with two removable inserts for a customized fit
- Accommodates prescribed orthotics
- Soft, Nylex fabric lining
- Wide, synthetic fiber shank
- Durable rubber outsole
- Soft, foam-padded tongue and collar
- Firm heel counter and rocker bottom

### RUMMY

- 80555-C1 Black

### Sizes:

Medium (B) 5-11,12  
 Wide (D) 5-11,12  
 Wide Wide (EE) 5-11,12



ICS Shoes  
 Voice: (877) 553-5544  
 Email: [info@icsshoes.com](mailto:info@icsshoes.com)  
 Website: [www.icsShoes.com](http://www.icsShoes.com)

# Women's

LATTICE



CANASTA



## Lattice, Canasta

### HCPCS Code A5500 Added Depth

- Added Depth with removable insert
- Accommodates prescribed orthotics
- Soft, Nylex fabric lining
- Tempered steel shank
- Lightweight, flexible rubber outsole
- Firm heel counter

### LATTICE

- 82042-C5 Silver with Mesh
- 82042-C1 Black with Mesh

### CANASTA

- 82044-C1 Black with Mesh
- 82044-C6 Bone with Mesh

### Sizes:

- Medium (B) 5-11,12
- Wide (D) 6-11,12
- Wide Wide (EE) 6-11,12



# Women's



CHECKERS



CHECKERS V



## Checkers, Checkers V

HCPCS Code A5500

### Double Depth

- Double Depth with two removable inserts for a customized fit
- Accommodates prescribed orthotics
- Soft, Nylex fabric lining
- Dual shank system
- Durable rubber outsole
- Firm heel counter and rocker bottom
- Soft, foam-padded tongue and collar

### CHECKERS

- 80560-C4 White with Mesh
- 80560-C1 Black with Mesh
- 80560-P4 White

### CHECKERS V

- 84565-C1 Black with Mesh
- 84565-P4 White
- 84565-C4 White with Mesh

### Sizes:

Medium (B) 5-11,12

Wide (D) 5-11,12

Wide Wide (EE) 5-11,12



ICS Shoes

Voice: (877) 553-5544

Email: [info@icsshoes.com](mailto:info@icsshoes.com)

Website: [www.icsShoes.com](http://www.icsShoes.com)

# Plantar Fasciitis

Plantar Fasciitis is a persistent pain located on the plantar (bottom) of the heel and the medial (inside) of the foot. The plantar fascia is a fibrous, tendon-like structure that extends the entire length of the bottom of the foot, beginning at the heel bone and extending to the base of the toes.

During excessive activity, the plantar fascia can become irritated, inflamed and even tear if the area is subject to repetitive stress. Heel contact during the gait cycle exposes a specific area to this stress. This area is known as the medial-plantar aspect of the heel where the plantar fascia attaches to the heel bone.

**Symptoms** - The pain resulting from this injury is most noticeable in the morning when the first few steps are taken, but then subsides with prolonged walking. Likewise, during athletic activity the pain will occur in the beginning of the exercise routine and then subside as activity continues.

**Footwear** - Footsaver® footwear is often recommended by Podiatrists for Plantar Fasciitis. They are designed with long counters for support and stability, extra toe room and vertical depth to accommodate prescribed orthotics.



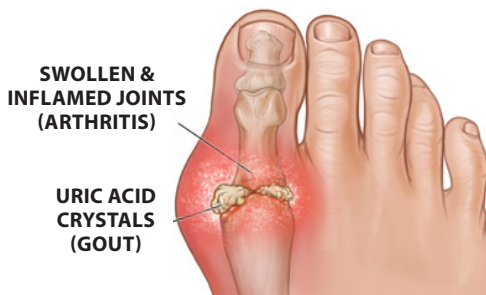
# Arthritis

Arthritis is not one disease, but over 100 known diseases that affect bone, muscles and joints. The term means inflammation of a joint. It is one of the most ancient diseases known to man. Whether inherited or from trauma, old age or injury, the disease can be degenerative, inflammatory, disfiguring and painful. Arthritis comes in many forms: Rheumatoid, Osteoarthritis and Gout to name a few.

**Symptoms** - Rheumatoid is one of the most common forms of arthritis, yet the causes are unknown. It attacks females three times more frequently than males. The synovial fluid which encapsulates the joint becomes inflamed causing scar tissue. Pain, swelling and deformity ensue (particularly obvious in the hands and feet), which creates limited movement and mobility.

Osteoarthritis is called the “wear and tear” arthritis. It is a progressive, degenerative disease. Women are affected more than men and most women experience difficulties after menopause. The degenerative process involves a steady thinning of the joint cartilage causing pain, tenderness, stiffness, abnormal sensations in the hands and feet and loss of flexibility. The degenerative process goes unnoticed until the bones begin to rub together. Gout is characterized by a rapid onset of pain in the affected joint, followed by warmth, swelling, redness and tenderness.

**Footwear** - Footsaver® footwear is often recommended by Podorthists for Arthritis. They are designed with long counters for support, extra toe room and vertical depth to accommodate prescribed orthotics.



ICS Shoes  
Voice: (877) 553-5544  
Email: [info@icsshoes.com](mailto:info@icsshoes.com)  
Website: [www.icsshoes.com](http://www.icsshoes.com)



# Men's

RASCAL



PINOCHLE



DOMINO



POKER



BRIDGE



## Rascal, Domino, Bridge, Pinochle, Poker

### HCPCS Code A5500

### Double Depth

- Double Depth with two removable inserts for a customized fit
- Accommodates prescribed orthotics
- Soft, Nylex fabric lining
- Wide, tempered steel shank
- Lightweight, polyurethane outsole
- Soft, foam-padded tongue and collar
- Firm heel counter and rocker bottom

### RASCAL

- 94885-S1 Black with Stretch Fabric

### DOMINO

- 90678-P1 Black

### BRIDGE

- 94859-P1 Black

### PINOCHLE

- 90895-P2 Brown
- 90895-P1 Black

### POKER

- 94837-P2 Brown
- 94837-P1 Black

### Sizes:

- Medium (D) 8-12,13,14
- Wide (EE) 8-12,13,14
- 4W (4E) 8-12,13,14

# Men's



SPADES



SPADES V



## Spades, Spades V

HCPCS Code A5500

Double Depth

- Double Depth with two removable inserts for a customized fit
- Accommodates prescribed orthotics
- Soft, Nylex fabric lining
- Wide, dual shank system
- Durable rubber outsole
- Soft, foam-padded tongue and collar
- Firm heel counter and rocker bottom

### SPADES

- 90805-P1 Black
- 90805-C4 White
- 90805-C1 Black with Mesh

### SPADES V

- 94735-C4 White with Mesh
- 94735-P1 Black
- 94735-C1 Black with Mesh

### Sizes:

- Medium (D) 8-12,13,14
- Wide (EE) 8-12,13,14
- 4W (4E) 8-12,13,14



ICS Shoes  
 Voice: (877) 553-5544  
 Email: [info@icsshoes.com](mailto:info@icsshoes.com)  
 Website: [www.icsShoes.com](http://www.icsShoes.com)

SHUFFLE



BUNCO



**Shuffle, Bunco**

**HCPCS Code A5500**  
**Double Depth**

- Double Depth with two removable inserts for a customized fit
- Accommodates prescribed orthotics
- Soft, Nylex fabric lining
- Wide, dual shank system (Shuffle)
- Wide, nylon shank (Bunco)
- Durable rubber outsole
- Soft, foam-padded tongue and collar
- Firm heel counter and rocker bottom

**SHUFFLE**

- 90827-S1 Black Stretch Fabric

**BUNCO**

- 94994-C1 Black with Mesh

**Sizes:**

- Medium (D) 8-12,13,14
- Wide (EE) 8-12,13,14
- 4W (4E) 8-12,13,14

**FOOTSAVER® Medical Grade Insert**  
**Code A5512**

The most advanced, comfort-based orthotic. Ready for quick and easy modification.

- 3/16" Plastazote®
- 5/16" EVA Shore A55-60 Durometer




**Fits Women's Shoe Size:**

**Fits Men's Shoe Size:**

**Insert Size:**

|                 |                 |   |
|-----------------|-----------------|---|
| 5 to 6.5.....   | N/A.....        | 1 |
| 7 to 8.5.....   | 6 to 7.5.....   | 2 |
| 9 to 10.5.....  | 8 to 9.5.....   | 3 |
| 11 to 12.5..... | 10 to 11.5..... | 4 |
| N/A.....        | 12 to 14.....   | 5 |



# F O O T S A V E R .<sup>®</sup>

*For feet in need of special care*

*Footsaver<sup>®</sup> specializes in footwear designed to alleviate the pain and complications of many foot health problems. Footsaver<sup>®</sup> offers the latest technology in a wide variety of styles, sizes and widths.*

*Whether you're searching for orthopedic, diabetic or other medical shoes, Footsaver<sup>®</sup> is where you'll find the support and comfort **for feet in need of special care.***

Women's Shoes Pages 3-6

Men's Shoes Pages 9-11

Medical Grade Inserts Page 11

Diabetes - Page 2

Plantar Fasciitis - Page 7

Arthritis Page - 8